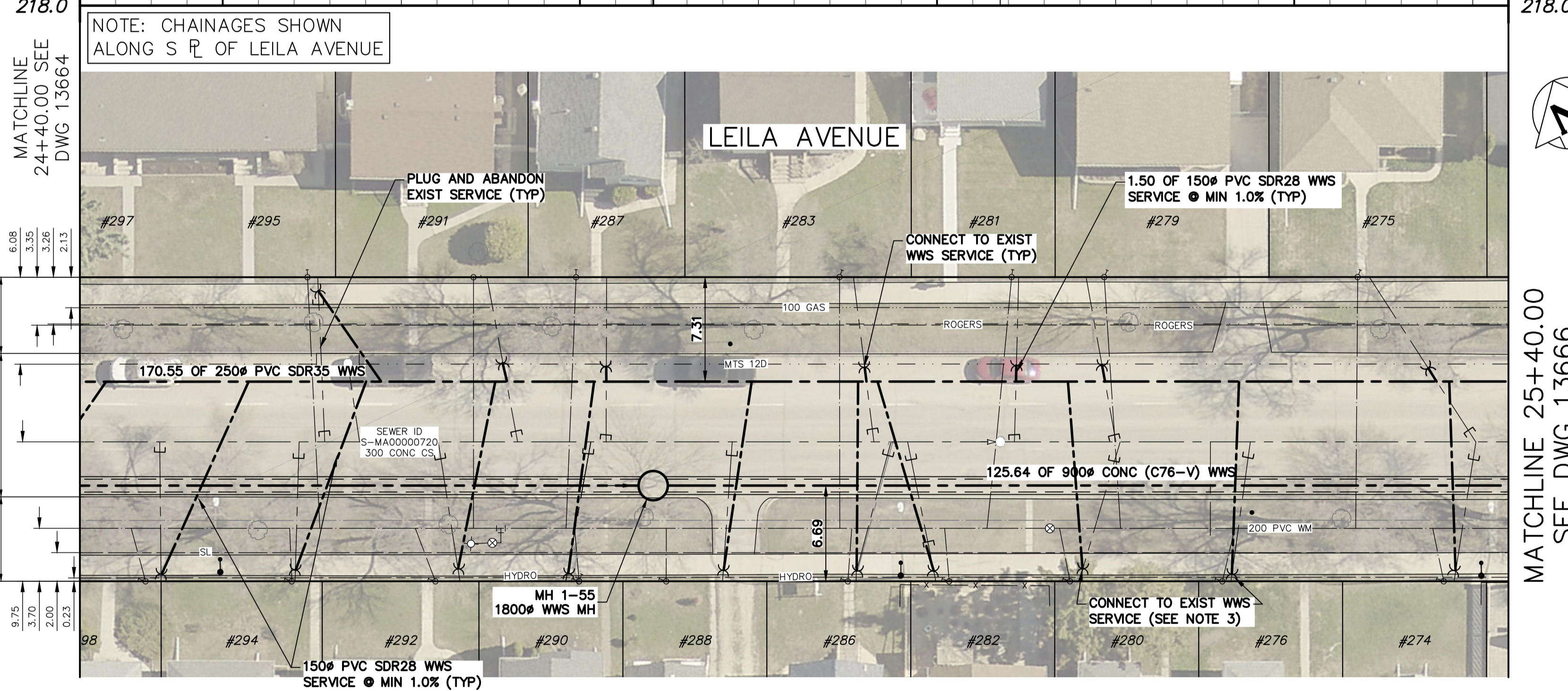


- NOTES:**
- WHEN INSTALLING PROPOSED WASTEWATER SEWERS ON LEILA AVE TAKE CAUTION WHEN CROSSING EXISTING RESIDENTIAL WATER SERVICES.
 - CONTRACTOR SHALL VERIFY ELEVATION OF EXISTING SEWER SERVICES AT PROPOSED DOWNSTREAM CONNECTION LOCATIONS PRIOR TO INSTALLATION OF COLLECTOR WWS TO ALLOW FOR CHANGES OF GRADE TO THE COLLECTOR WWS.
 - WHEN CROSSING THE NEW WWS TRUNK ON LEILA AVE WITH NEW WWS SERVICES (ALL SOUTH WWS SERVICES BETWEEN SALTER ST AND AIKINS ST) TO CONNECT TO THE COLLECTOR SEWER, TAKE CAUTION NOT TO CROSS SHAFT LOCATIONS FOR THE NEW WWS TRUNK TO MITIGATE THE RISK OF POTENTIAL SERVICES SETTLEMENT.



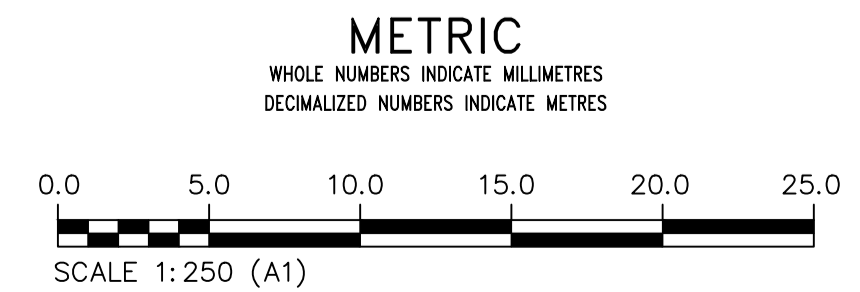
SEWER SERVICE INFORMATION					
ADDRESS	STATUS	SIZE (mm) MATERIAL	COORDINATES AT JUNCTION	COORDINATES AT PROPERTY	REMARKS
#274 LEILA AVE	ACTIVE	150 UNKNOW	N=5534047.98 E=635101.30	N=5534039.79 E=635095.79	NONE
#275 LEILA AVE	ACTIVE	150 UNKNOW	N=5534047.98 E=635101.30	N=5534061.58 E=635099.45	NONE
#276 LEILA AVE	ACTIVE	150 UNKNOW	N=5534054.67 E=635087.02	N=5534046.42 E=635091.65	NONE
#276 LEILA AVE	ACTIVE	150 UNKNOW	N=5534055.82 E=635084.56	UNKNOW	NONE
#279 LEILA AVE	ACTIVE	150 UNKNOW	N=5534058.69 E=635078.44	N=5534069.99 E=635081.50	NONE
#280 LEILA AVE	ACTIVE	150 UNKNOW	N=5534058.54 E=635078.77	N=5534050.93 E=635072.03	NONE
#281 LEILA AVE	ACTIVE	150 UNKNOW	N=5534061.68 E=635072.07	N=5534071.99 E=635072.22	NONE
#282 LEILA AVE	ACTIVE	150 UNKNOW	N=5534064.85 E=635065.29	N=5534055.18 E=635062.94	NONE
#286 LEILA AVE	ACTIVE	150 PVC	N=5534065.41 E=635064.12	N=5534057.55 E=635057.90	NONE
#283 LEILA AVE	ACTIVE	150 UNKNOW	N=5534065.85 E=635063.16	N=5534076.89 E=635066.75	NONE
#288 LEILA AVE	ACTIVE	150 UNKNOW	N=5534070.07 E=635054.18	N=5534061.51 E=635049.43	NONE
#287 LEILA AVE	ACTIVE	150 UNKNOW	N=5534073.80 E=635046.19	N=5534084.22 E=635051.10	NONE
#290 LEILA AVE	ACTIVE	150 PVC	N=5534074.26 E=635045.22	N=5534066.17 E=635039.49	NONE
#291 LEILA AVE	ACTIVE	150 UNKNOW	N=5534076.43 E=635040.57	N=5534087.78 E=635032.78	NONE
#292 LEILA AVE	ACTIVE	150 UNKNOW	N=5534078.79 E=635035.55	N=5534069.31 E=635032.78	NONE
-	ACTIVE	150 UNKNOW	N=5534081.14 E=635030.56	UNKNOW	MTS MH DRAIN?
#295 LEILA AVE	ACTIVE	150 UNKNOW	N=5534082.16 E=635028.35	N=5534092.80 E=635032.79	NONE
#294 LEILA AVE	ACTIVE	150 UNKNOW	N=5534082.92 E=635026.73	N=5534074.21 E=635022.33	NONE
#298 LEILA AVE	ACTIVE	150 UNKNOW	N=5534087.06 E=635017.89	N=5534078.19 E=635013.84	NONE

SEWER JUNCTION INFORMATION FROM SEWER VIDEO INSPECTION SEWER ID S-MA00001284		
DISTANCE FROM MH ID	DIAMETER	CLOCK
38.5	150	2
48.3	150	2
50.2	150	11
52.7	150	11
57.8	150	2
63.7	150	11
68.8	150	1
69.9	150	10
78.7	250	2
88.5	150	11
89.8	150	2
91.0	150	2

SEWER JUNCTION INFORMATION FROM SEWER VIDEO INSPECTION SEWER ID S-MA00016949		
DISTANCE FROM MH ID	DIAMETER	CLOCK
8.1	150	11
8.4	150	2
14.8	150	2
17.5	150	2
33.3	150	1
33.3	150	11

**ENGINEERS
GEOSCIENTISTS**
MANITOBA
Certificate of Authorization
KGS Group
No. 245

FOR INDEX PAGE
SEE DWG 13643



WARNING
IF POWER EQUIPMENT OR EXPLOSIVES ARE TO BE USED FOR EXCAVATION ON THIS PROJECT THE CONTRACTOR MUST:
1) NOTIFY THE GAS COMPANY OF THE PROPOSED LOCATION OF EXCAVATION.
2) TAKE PRECAUTION TO AVOID DAMAGE TO GAS COMPANY INSTALLATIONS.
SEE PROVINCIAL REGULATION 21072 FOR DETAILS

LOCATION APPROVED
UNDERGROUND STRUCTURES
SUPV. U/G STRUCTURES COMMITTEE DATE
NOTE:
LOCATION OF UNDERGROUND STRUCTURES AS SHOWN ARE BASED ON THE BEST INFORMATION AVAILABLE BUT NO GUARANTEE IS GIVEN THAT ALL EXISTING UTILITIES ARE SHOWN OR THAT THE GIVEN LOCATIONS ARE EXACT. CONFIRMATION OF EXISTENCE AND EXACT LOCATION OF ALL SERVICES MUST BE OBTAINED FROM THE INDIVIDUAL UTILITIES BEFORE PROCEEDING WITH CONSTRUCTION.

VERTICAL DATUM: CGVD28 (HT2.0 Geoid)	
HORIZONTAL DATUM: NAD83 (June 1990), Zone 14	
DESIGNED BY	MID
CHECKED BY	TLE
DRAWN BY	GEL
APPROVED BY	RBO
SCALE:	
HORIZONTAL	1:250
VERTICAL	1:50
ISSUED FOR CONSTRUCTION	2026/03/10
DATE	DATE
NO.	REVISIONS

KGS GROUP
DESIGNED BY MID
CHECKED BY TLE
DRAWN BY GEL
APPROVED BY RBO
SCALE:
HORIZONTAL 1:250
VERTICAL 1:50
ISSUED FOR CONSTRUCTION 2026/03/10
DATE DATE
NO. REVISIONS

ENGINEER'S SEAL
ORIGINAL DRAWING SEALED BY:
M.A. IANKOVA-DEDOVA
2026/03/11
CONSULTANT DRAWING NUMBER
C1-24

THE CITY OF WINNIPEG
WATER AND WASTE DEPARTMENT
ENGINEERING SERVICES DIVISION
ARMSTRONG SEWER RELIEF WORKS
CONTRACT 1
LEILA AVENUE
113.1 E OF SALTER STREET TO
58.9 W OF AIKINS STREET
SHEET 24 OF 46
CITY DRAWING NUMBER
13665